

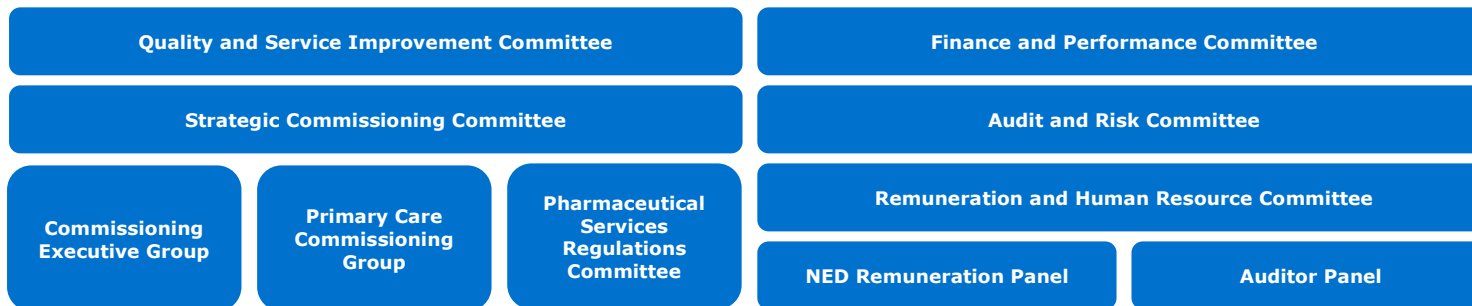
Functions and Decisions Map



The ICB is a statutory NHS organisation that is responsible for the following functions:

- Prepares a **five-year population health strategy and five-year strategic commissioning plan** to set out how the ICB's functions will be delivered to meet the health needs of people living in Nottingham and Nottinghamshire, having due regard to the Integrated Care Strategy and the Joint Local Health and Wellbeing Strategies. **Allocates resources** across the system to deliver the strategy and plan.
- **Arranges for the provision of hospital and other health services** in line with the allocated resources. This includes putting contracts and agreements in place to secure delivery of the strategy and plan and leads on major service transformation programmes.
- Arranges for the provision of **continuing healthcare, funded nursing care, personal health budgets and direct payments for healthcare**.
- Arranges for the provision of **primary medical, dental, ophthalmic and pharmacy services** (as delegated to the ICB by NHS England).
- Manages **Individual Funding Requests**.
- Establishes **joint working arrangements** with partners that embed collaboration as the basis for delivery of joint priorities.
- Establishes **governance arrangements** to support accountability for whole-system delivery and performance and to ensure statutory duties are met. This includes preparing a constitution and other related documents that describe how the ICB's governance arrangements operate.
- **Understands local priorities, tracks delivery of plans, monitors and addresses variation and drives continuous improvement** in performance and outcomes, using joined-up data and digital capabilities.
- Ensures NHS plays a full part in **social and economic development and environmental sustainability**.
- Drives joint work on **estates, procurement, supply chain and commercial strategies**.
- Prepares a **joint capital resource use plan** with partner NHS Trusts and NHS Foundation Trusts.
- **Plans for, responds to, and leads recovery from incidents (EPRR)**.
- Works with partners to **safeguarding vulnerable children, young people and adults**.
- Determines the **terms and conditions** of employees, and the **remuneration and allowances** for Board and committee members.
- Prepares an **Annual Report and Accounts**.
- Maintains a **Register of Interests** and manages conflicts of interest.

Decisions associated with the above functions are made by the ICB's Board and its Committees. More information on the following Committees can be found in the ICB's Governance Handbook:



The **Integrated Care Partnership (ICP)** is a statutory joint committee between the ICB and the Nottingham City and Nottinghamshire County Councils.

1

The ICP:

- Prepares an **Integrated Care Strategy** setting out how the assessed health, social care and public health needs of people living in Nottingham and Nottinghamshire (i.e. as per the JSNAs) are to be met by the ICB, the Nottingham City and Nottinghamshire County Councils, and NHS England.

The **Health and Wellbeing Boards** are statutory committees of the relevant Local Authorities, with statutory ICB membership.

2

The Boards discharge the ICB and Local Authorities' joint duties to:

- Prepare **Joint Strategic Needs Assessments (JSNAs)** for the Local Authority areas.
- Prepare **Joint Local Health and Wellbeing Strategies** that set out how the Local Authority, ICB and NHS England will meet the assessed needs in the Local Authority areas.

Midlands Joint and Collaborative Commissioning Committee is a joint committee of the eleven ICBs in the Midlands, which has been established in collaboration with NHS England to make 'at scale' commissioning decisions relating to:

3

- Jointly exercise the ICBs' delegated commissioning functions relating to **specialised acute, mental health, learning disability and autism services** (as delegated to the ICBs by NHS England).
- Collaboratively commission the associated retained commissioning functions of NHS England.