

What is Co-production?



“

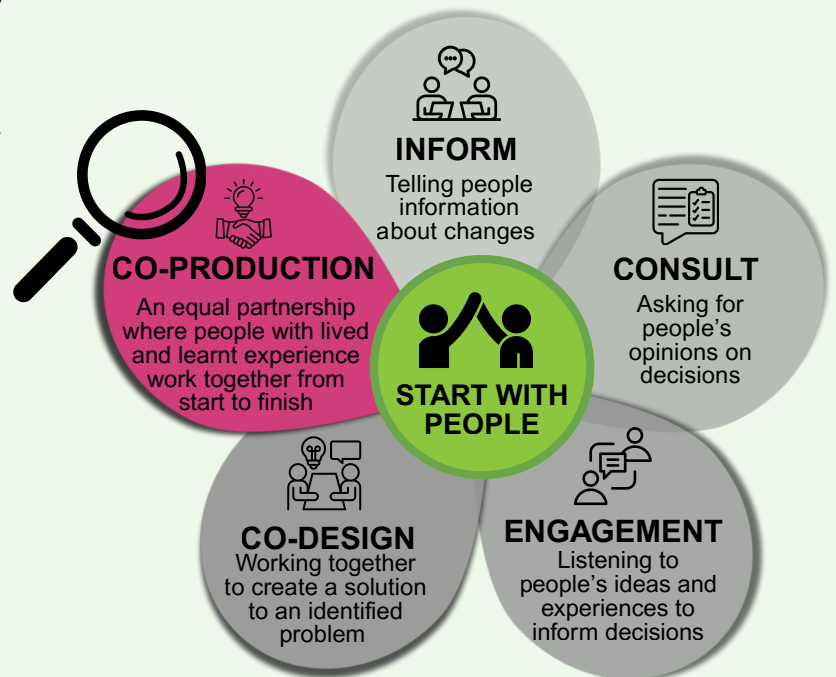
Co-production is a partnership where people with lived and learned experience work together to have meaningful influence over the things that matter to them.

”

Within the ICB, we involve people and communities in a range of ways.

Co-production is the most collaborative and empowering approach, but it sits within a broader spectrum of participation.

Each method plays a role in ensuring people's voices are heard and helps shape better, more responsive services.



To understand how co-production fits within this spectrum, it's helpful to compare it with other approaches, such as informing, consulting, and engaging.

When co-production is done well, people and carers with lived experience of health and care:

- Work as equal partners
- Decide together - everyone has an equal voice
- Collaborate from start to finish
- Feel listened to and work in partnership with people
- Are recognised for their skills, knowledge and lived experience
- Feel valued, empowered and better connected



Co-production Principles and Values

Our principles guide how we will work together, putting people with lived experience at the heart of improving services. They set out what people can expect when they get involved, and what staff can do to create the right conditions.



Value people's skills, knowledge and interests to improve services.



Share what we learn and achieve through co-production.



Include anyone who wants to be involved.



Use clear, accessible communication for all.



Be honest and open to build trust.



Reflect on and improve how we work.



Support and develop confidence, knowledge and skills.



Build genuine partnerships and address power imbalances.



Value people's time and contributions with payment.



Encourage creativity and innovation.

“

It's not about ticking boxes; it's about co-creating services, policies, and solutions that are shaped by lived experience, driven by collaboration, and built to last – so that together, we can improve people's health outcomes and reduce inequalities.

ICB Coproduction Strategy , 2025-2028

”

Our co-production values

HONESTY AND TRUST

People take time to build relationships. Information is shared to help understanding and any barriers to making progress are discussed in an open and transparent way.

EQUALITY

Staff share power with people, by involving them from the start. This allows everyone to learn together about what works and what doesn't.

ACCESSIBILITY

Staff use different, more accessible ways to communicate and think about what needs to change to involve people better.

RESPECT

Each person's input is respected and valued. There are clear policies on expenses and remuneration and people understand how their contribution is being used.

DIVERSITY

Diversity: People are brought together from a range of different experiences, skills, and perspectives to work together to find solutions to problems.

Values shape the culture that allows coproduction to thrive.

By embedding our values into everything we do, we create a foundation where people feel respected, empowered, and able to influence real change.

The HEARD diagram and values was developed by Our Voice – Nottinghamshire County Council's Adult Social Care Strategic Co-production group. We share these values as a system approach.

The strategy has been co-produced, drawing on insights from listening events and developed in partnership with the My Life Choices Strategic Co-Production Group.



[Read the Co-production Strategy in full on our website](#)