

Nottingham and Nottinghamshire Structure Charts

As of 31st October 2021

WORKING DOCUMENT

Key

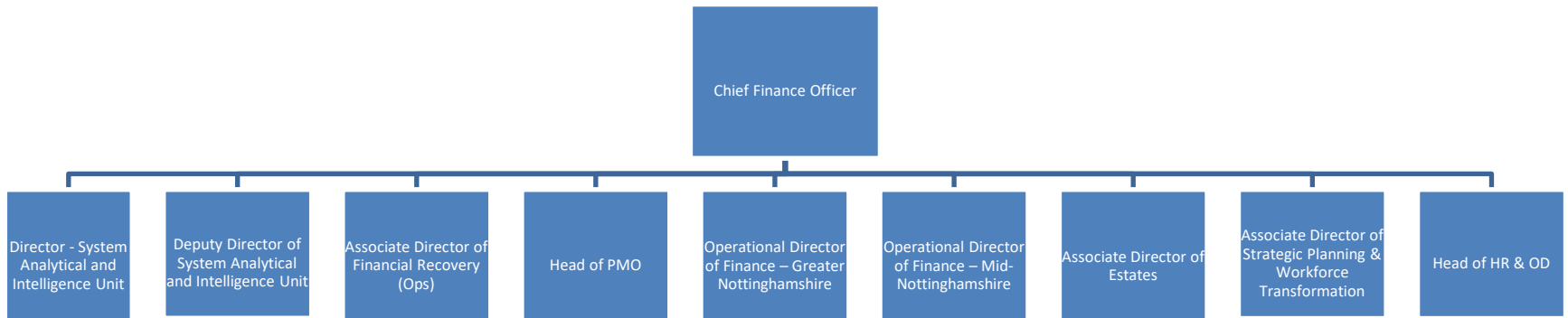


- Those in a striped back-ground are fixed term post
- Those with red text are actively being recruited to
- Those in a yellow box are Arden GEM embedded staff members

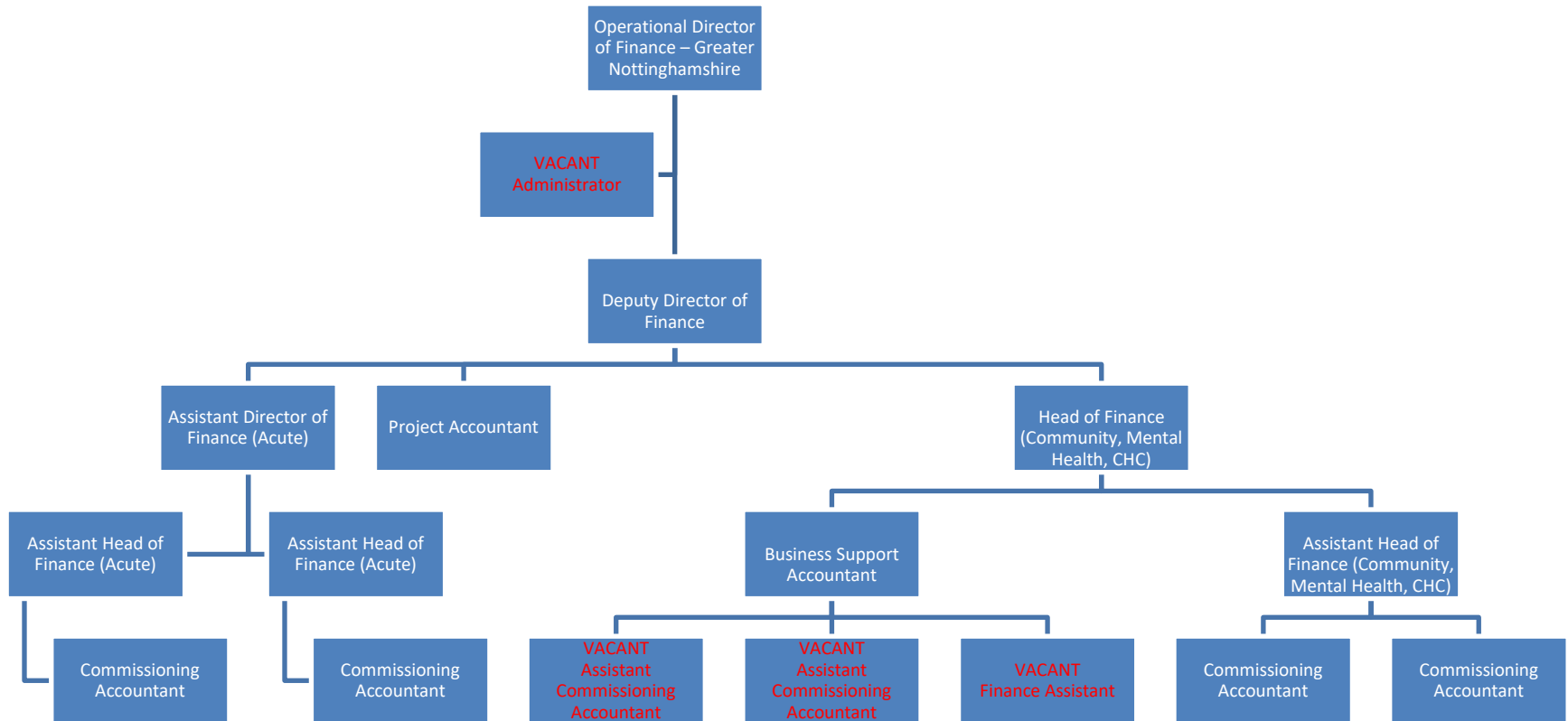
Finance and Resources

Exec: Stuart Poynor – Chief Financial Officer

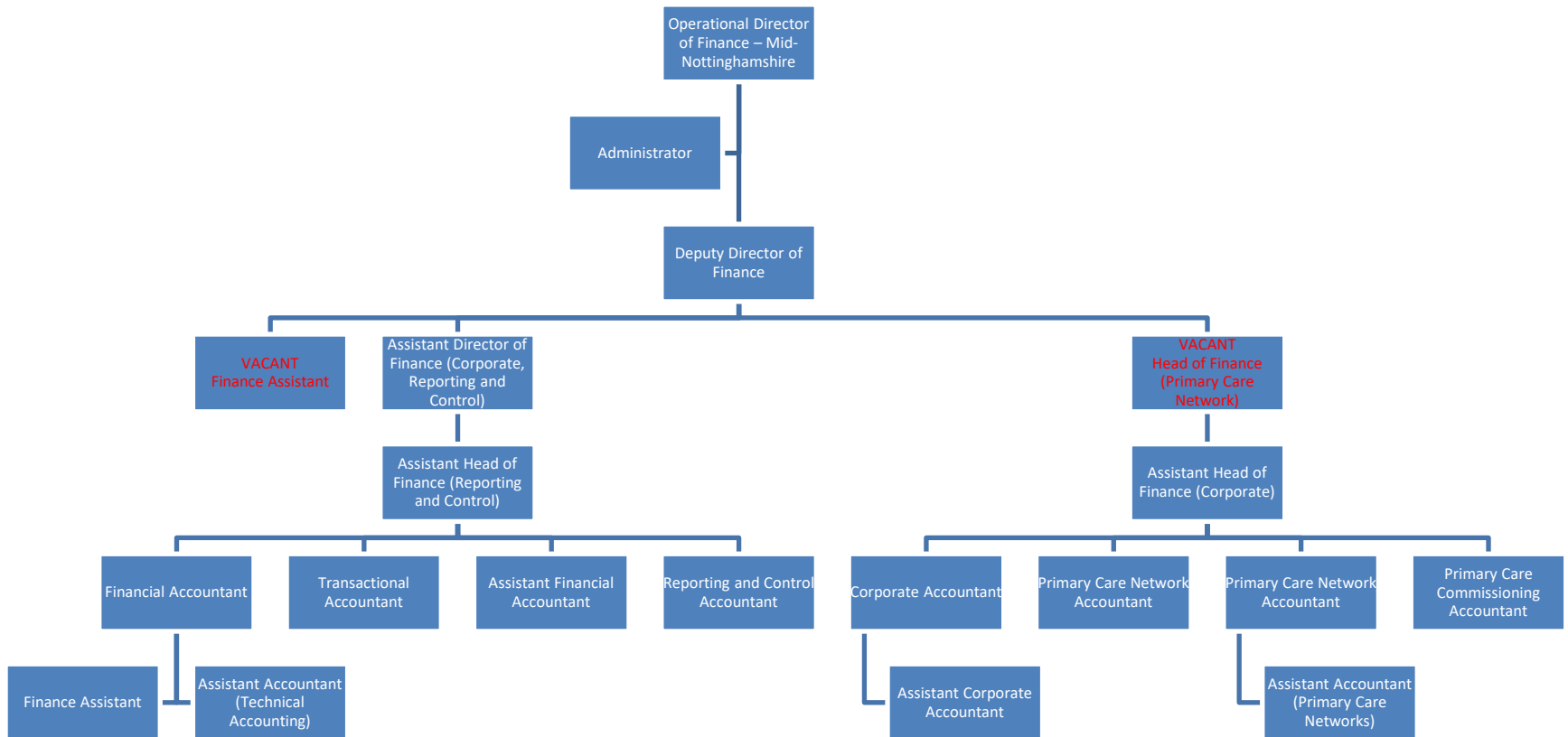
Senior Team



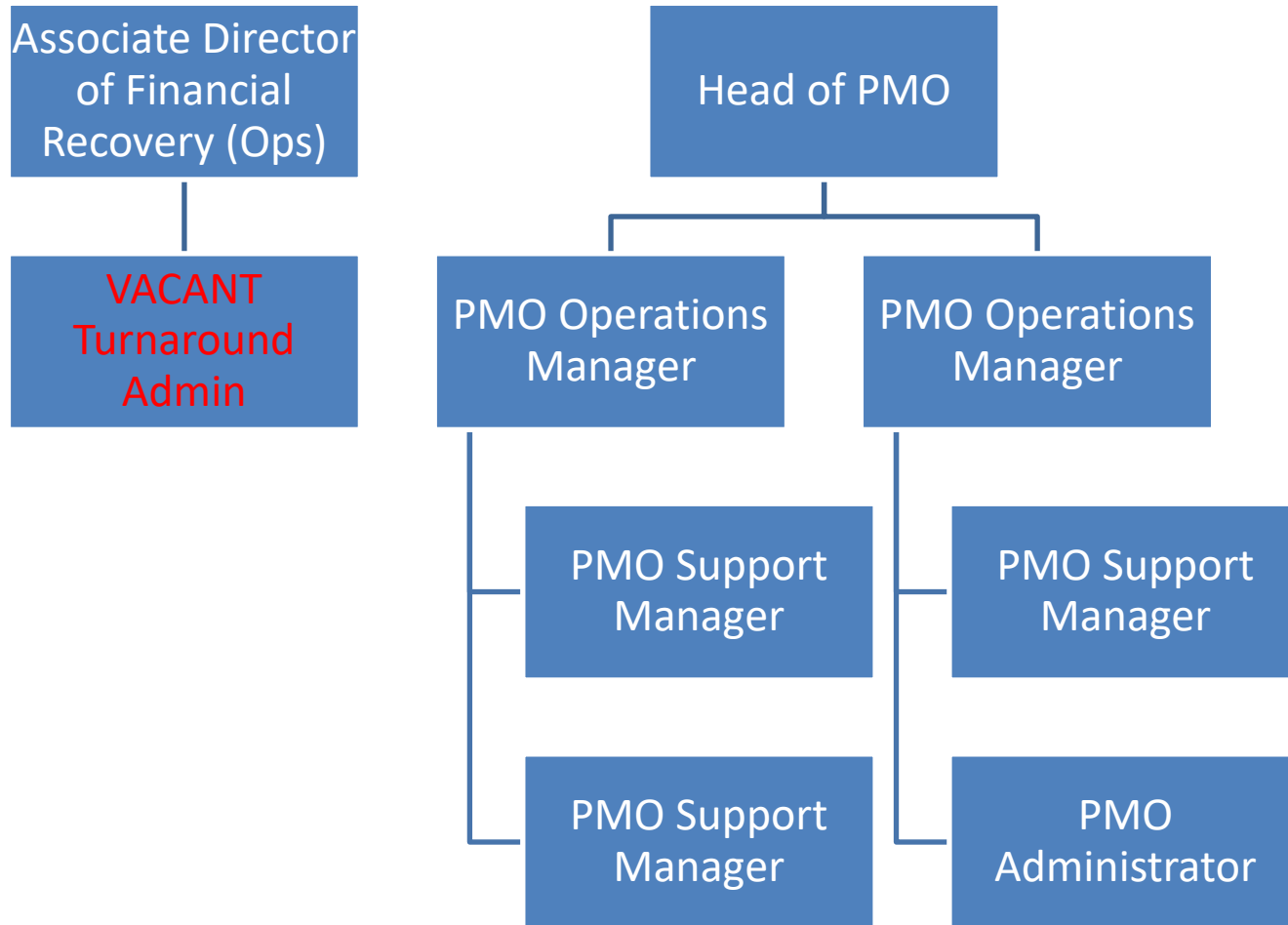
Acute, MH, Community, and Other Commissioning



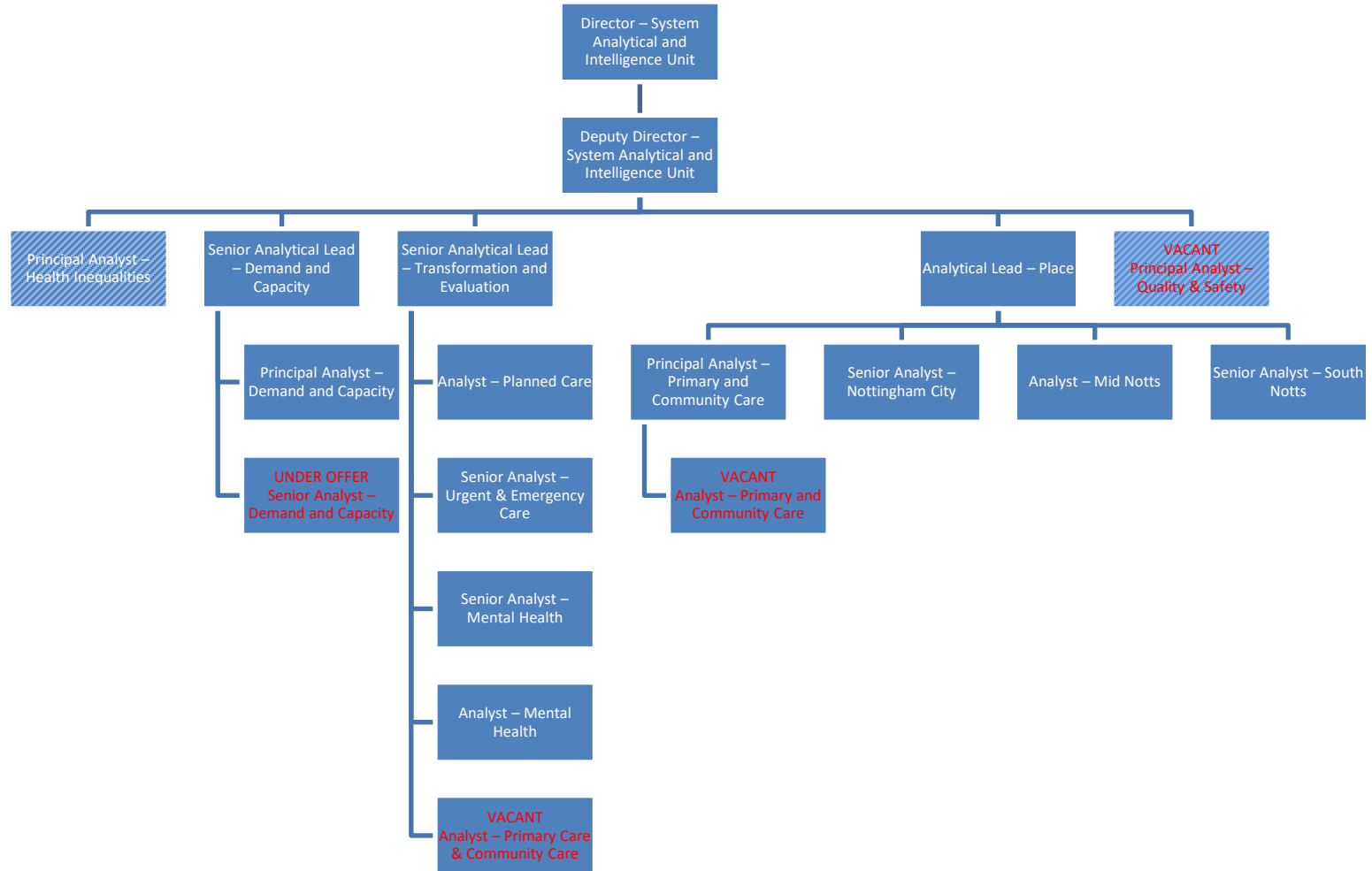
Primary Care Network Finance, Corporate, Financial Reporting, and Control



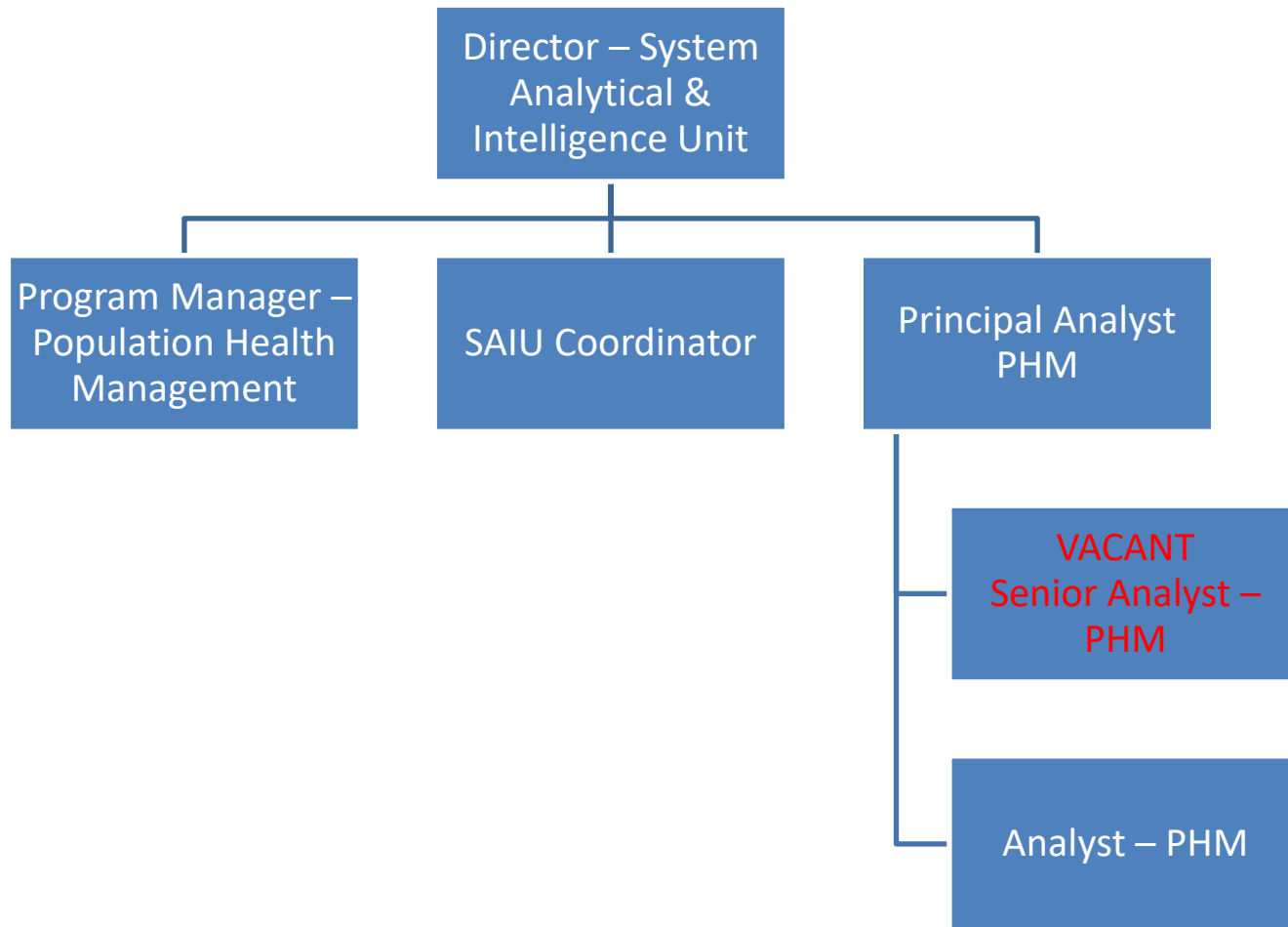
Turnaround – Financial Recovery/PMO



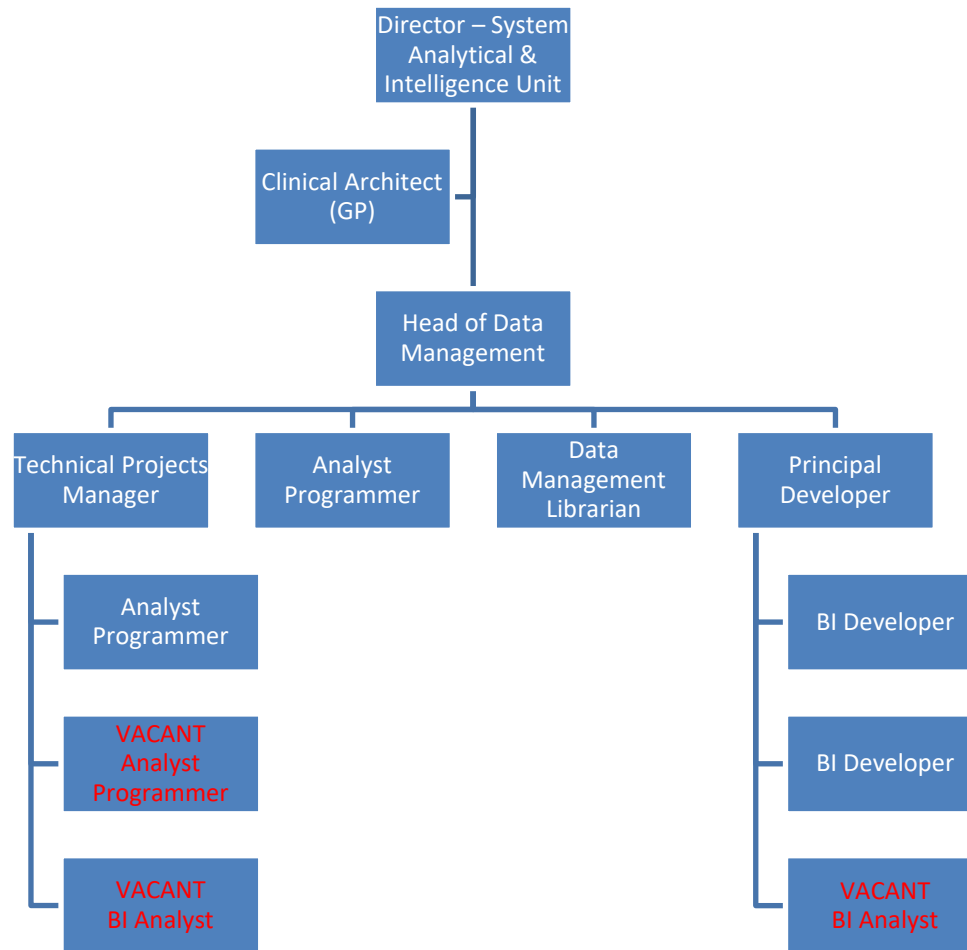
System Analytic and Intelligence Unit



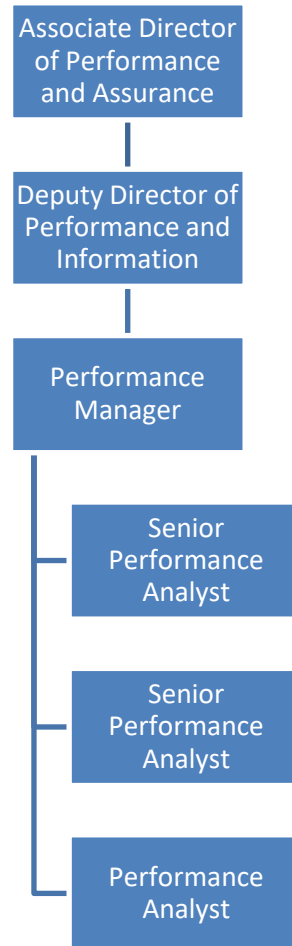
System Intelligence Unit – Population Health Management



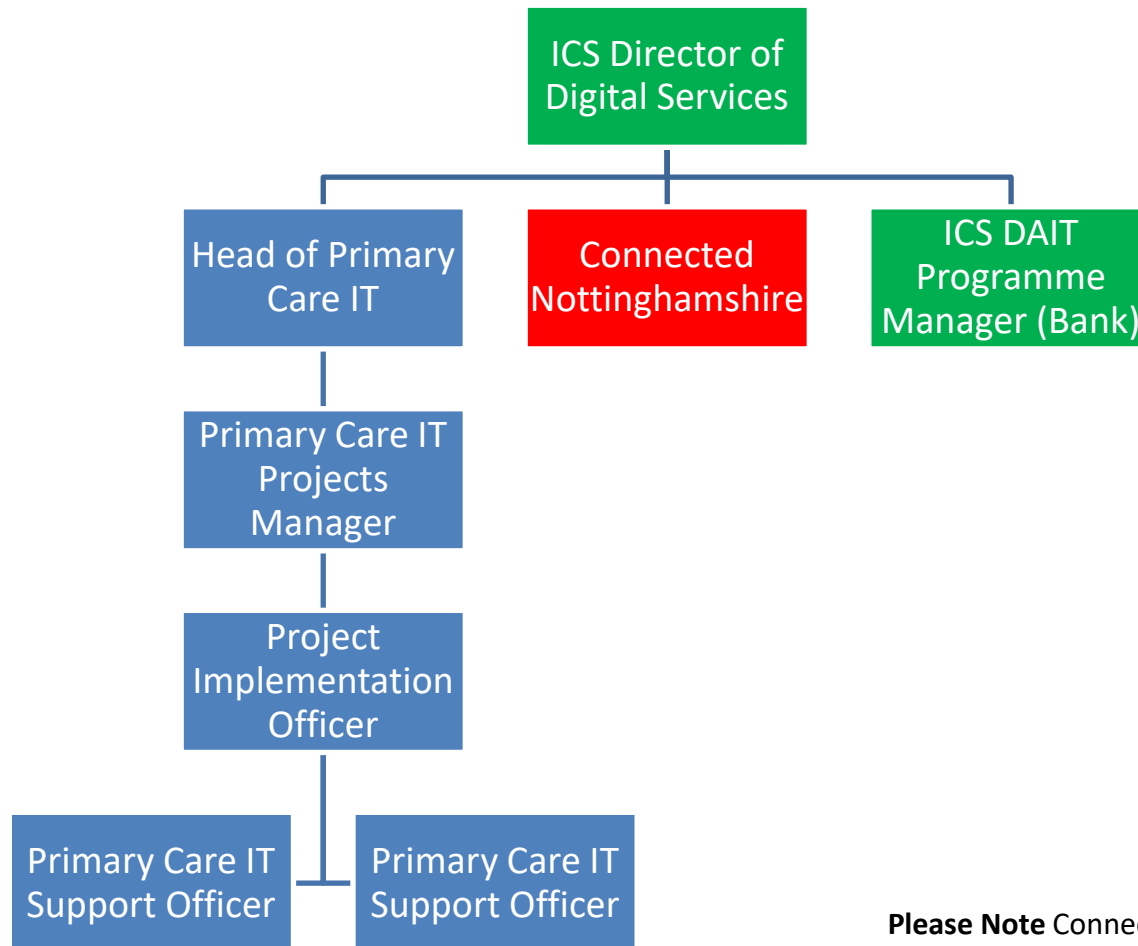
System Intelligence Unit – Data Management



Performance Reporting and Assurance

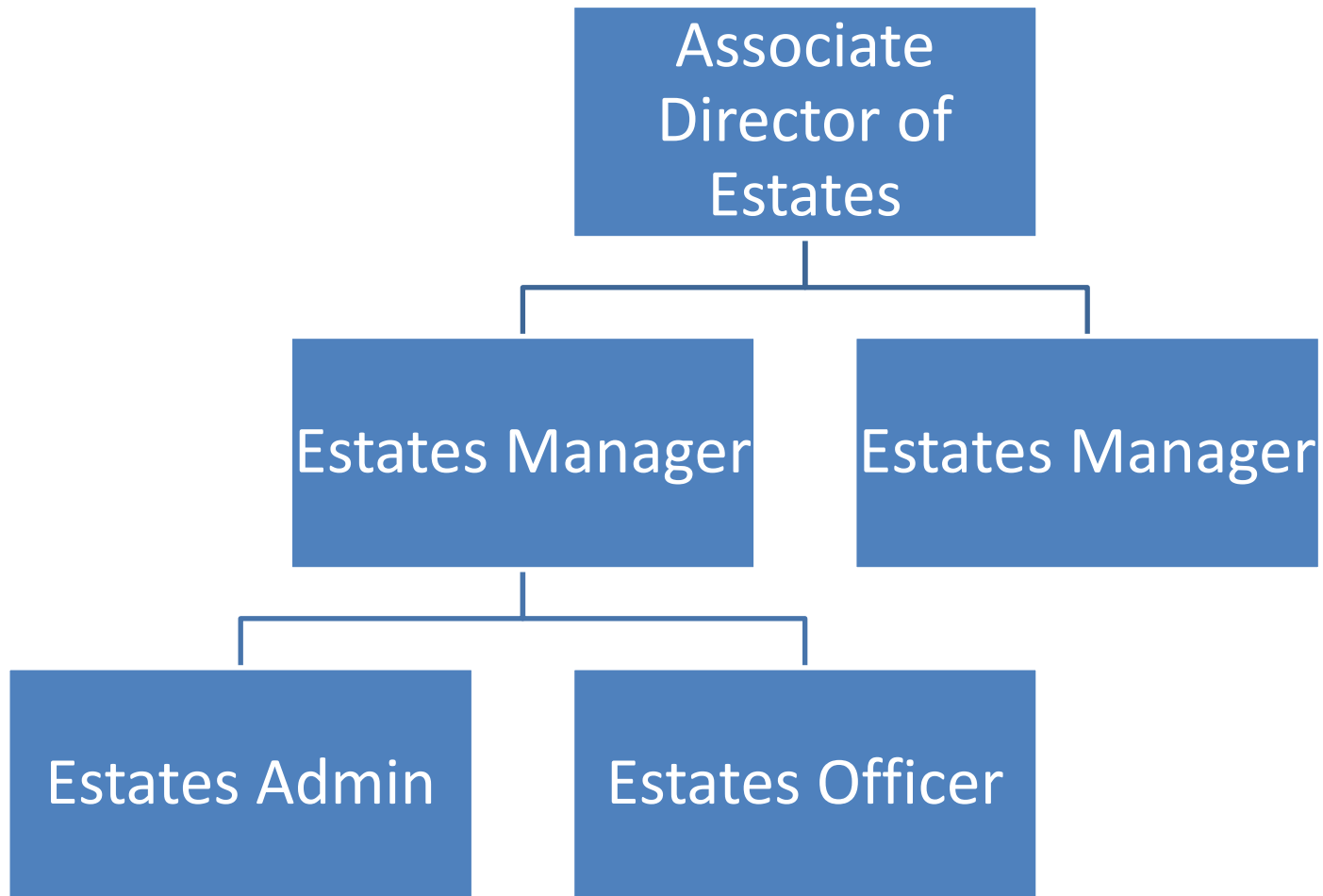


Digital Services and Primary Care IT Services

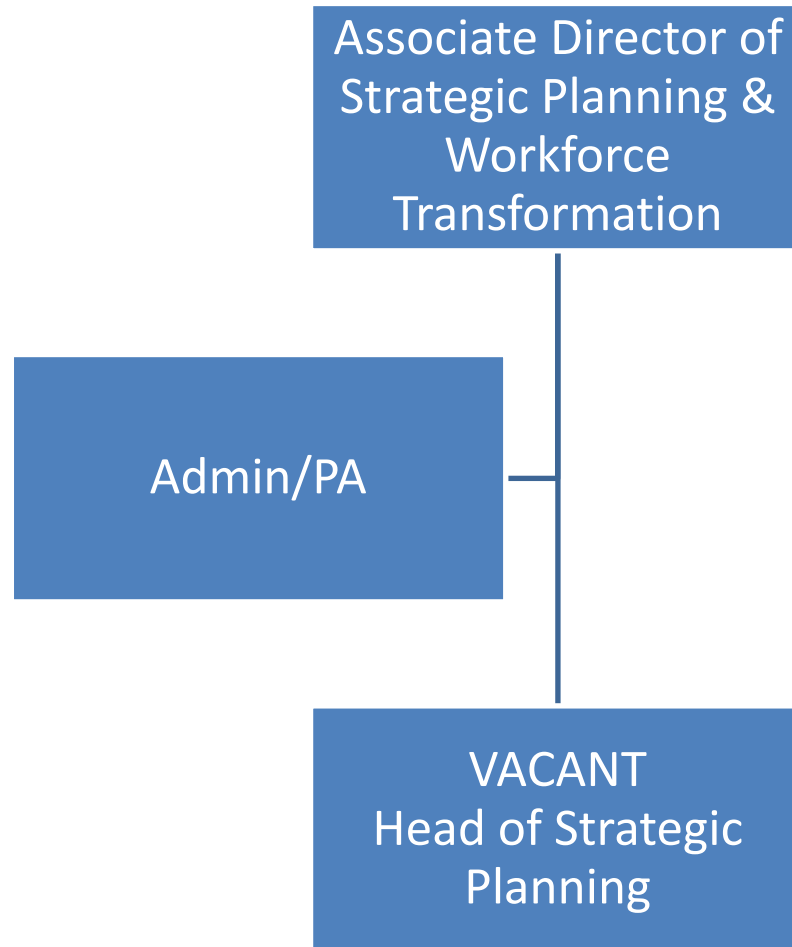


Please Note Connected Nottinghamshire will remain managed by NHIS until 31 March 2022

Estates



Planning and Workforce



HR & OD

