

Dear Requestor

RE: Freedom of Information Request

With reference to your request for information I can confirm in accordance with Section 1 (1) of the Freedom of Information Act 2000 that we do hold the information that you have requested. A response to each part of your request is below.

In the request you asked:

Please provide me with a copy of the diagnostic pathway for adults (as described in the Autism Act 2009) which includes the following information:

- (a) the provision of relevant services for the purpose of diagnosing autistic spectrum conditions in adults;

The CCG currently commissions Nottinghamshire Healthcare NHS Foundation Trust to provide our adult diagnostic assessment and treatment service for autism, which is called the Neurodevelopmental Specialist Service (NeSS). The service is delivered in line with NICE guidance and the Autism Act and provides a multi-disciplinary team approach to assessment and post-diagnostic support.

[Neurodevelopmental Specialist Service NeSS \(nottinghamshirehealthcare.nhs.uk\)](https://www.nottinghamshirehealthcare.nhs.uk/neurodevelopmental-specialist-service)

- (b) the identification of adults with such conditions;

Referrals are received from GPs, Mental Health professionals, Children's services (for those young people transitioning into adult services), Prison healthcare professionals (for those individuals released into the community), criminal justice practitioners and Adult Social Care.

- (c) the assessment of the needs of adults with such conditions for relevant services;

A range of intelligence and data informed the development of the service to ensure it meets the needs of the service users including:

- Autism Joint Strategic Needs Assessments (JSNAs) and Health Needs Assessments (HNAs) developed by Nottingham City Council and Nottinghamshire County Council.
 - Service user feedback and engagement with local support groups.
 - NICE guidance for Autism assessment, diagnosis and treatment.
 - National Autism Strategy and local Autism Strategies developed by the Local Authorities.
- (d) planning in relation to the provision of relevant services to persons with autistic spectrum conditions as they move from being children to adults;

The service has established links with children and young people services with a direct route of referral for those requiring transition to the adult service.

The Nottingham & Nottinghamshire Learning Disability and Autism (LD/A) Transformation Programme has a dedicated LD/A Children & Young People Steering Group which oversees the development of CYP autism services and transitions, and has representation from both CYP and adult services as well as experts by experience. This includes developments currently in progress as part of our commitment under the NHS Long Term Plan (2019) for autism.

The development of our Nottingham & Nottinghamshire All Age Autism Strategy will inform this transitions planning (please see section e below for more detail).

- (e) other planning in relation to the provision of relevant services to adults with autistic spectrum conditions;

An all age autism strategy is currently being developed by Nottingham City Council, Nottinghamshire County Council and Nottingham & Nottinghamshire CCG, which is overseen by the LD/A Transformation Programme Exec Board. This will determine our key priorities for the coming year and inform the development of the local all age autism action plan. Delivery will be over seen by the LD/A Executive Board (governance structure included below under section g)

The Nottingham & Nottinghamshire LD/A Transformation Programme also oversees planning and delivery against the commitments set out in the NHS Long Term Plan (2019) for autism including improving access to diagnostic assessments and the development of an adult autism pre-diagnostic support service that provides information, advice and guidance.

- (f) the training of staff who provide relevant services to adults with such conditions;

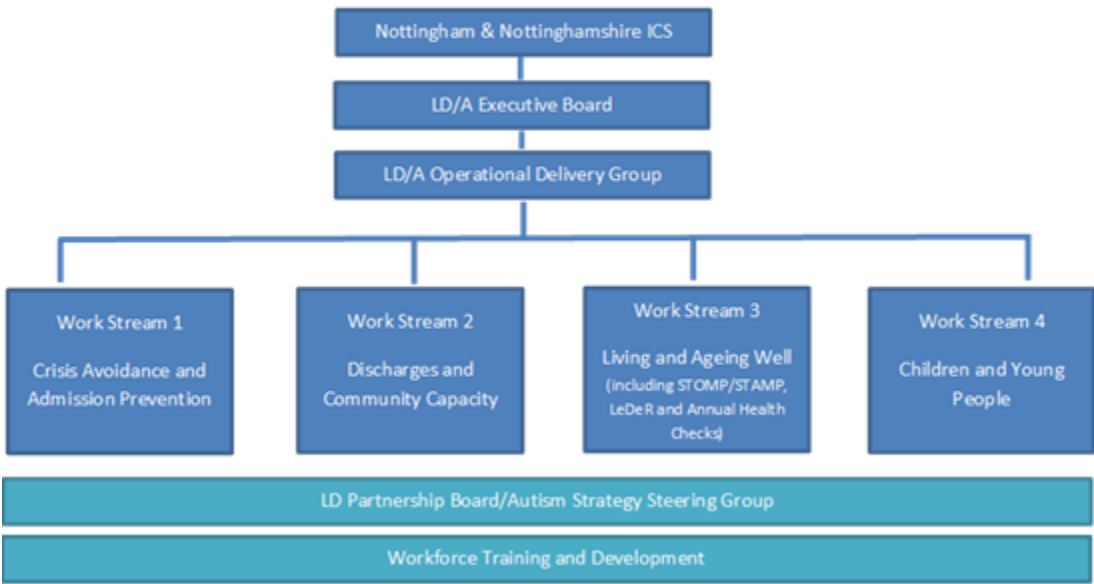
The Nottingham City Autism Strategy and Action Plan (due to be superseded by the all age autism strategy currently being developed) includes staff training as a key priority and autism awareness training

has been provided to local services including health, social care and other external professions such as Police and probation services.

Additional autism training has also been provided via the LD/A Transformation Programme for key partners, and local health and social care services are currently involved in the piloting of the Oliver McGowan Autism Training which will be mandatory for services in the near future.

(g) local arrangements for leadership in relation to the provision of relevant services to adults with such conditions

Below is the current governance structure for the Learning Disability and/or Autism Transformation Programme, which oversees the development of specialist autism services:



The LD/ASD Executive Board is a system-wide group that reports into the Nottingham and Nottinghamshire ICS. The Board is chaired by Melanie Brooks (Nottinghamshire County Council) and Susan Elcock (Nottinghamshire Healthcare Trust), while the Senior Responsible Owner for the programme is Rosa Waddingham (ICS Chief Nurse). All partners across the health and care system attend the Board and provide leadership and oversight to the Learning Disability and/or Autism Transformation Programme, in line with the Long Term Plan and any national updates to policy. NHS England and experts by experience are key Board members.

There is also a dedicated Neurodevelopmental Partnership Group which oversees the continual development and improvement of the adult autism service (NeSS), which is led by Nottinghamshire

Healthcare NHS Foundation Trust and includes representation from experts by experience and support groups.

If you are unhappy with the way in which your request has been handled, NHS Nottingham and Nottinghamshire Clinical Commissioning Group have an internal review procedure through which you can raise any concerns you might have. Further details of this procedure can be obtained by contacting Lucy Branson, Associate Director of Governance via lucy.branson@nhs.net or by writing to NHS Nottingham and Nottinghamshire CCG, Sir John Robinson House, Sir John Robinson Way, Arnold, Daybrook, Nottingham NG5 6DA.

If you remain dissatisfied with the outcome of the internal review, you can apply to the Information Commissioner's Office (ICO), who will consider whether the organisation has complied with its obligations under the Act, and can require the organisation to remedy any problems. Generally, the ICO cannot make a decision unless you have exhausted the complaints procedure provided by NHS Nottingham and Nottinghamshire Clinical Commissioning Group. You can find out more about how to do this, and about the Act in general, on the Information Commissioner's Office website at: <https://ico.org.uk/for-the-public/>

Complaints to the Information Commissioner's Office should be sent to:

FOI/EIR Complaints Resolution, Information Commissioner's Office, Wycliffe House, Water Lane, Wilmslow, Cheshire, SK9 5AF. Telephone 0303 123 1113 or report a concern via <https://ico.org.uk/concerns/>

Yours sincerely

Freedom of Information Officer on behalf of *NHS Nottingham and Nottinghamshire Clinical Commissioning Group*.

notts.foi@nhs.net

All information we have provided is subject to the provisions of the Re-use of Public Sector Information Regulations 2015. Accordingly, if the information has been made available for re-use under the [Open Government Licence](#) (OGL) a request to re-use is not required, but the license conditions must be met. You must not re-use any previously unreleased information without having the consent of NHS Nottingham and Nottinghamshire Clinical Commissioning Group. Should you wish to re-use previously unreleased information then you must make your request in writing (email will suffice) to the FOI Lead via notts.foi@nhs.net. All requests for re-use will be responded to within 20 working days of receipt.